

How to Read a Radio Remote Meter

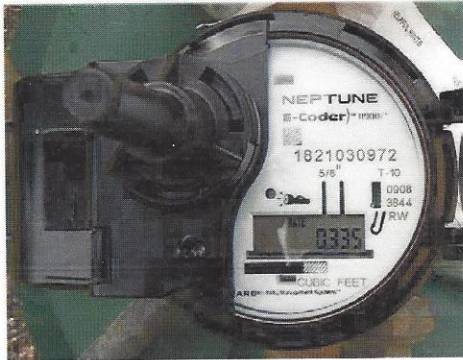


Figure 2



Figure 3

The LCD screen is activated by light. Shine a flashlight at the screen. The first flash of numbers as in **Figure 2** is the flow rate. This flashes on the screen about every six seconds alternating with the reading. The second flash of number is the billing units as in **Figure 3**. Write down all numbers on the screen. The first four numbers are the billing units. One unit = 100 cu ft or 748 gallons.

The meter is also equipped with a leak indicator. If you see a water faucet above the numbers on the left hand side, this could indicate a possible leak. The meter monitors a 24-hr period in 15 minute intervals.

	<p>SOLAR CELL Located at the top of the E-coder, supplies power for the LCD panel (light activated.)</p>
	<p>LEAK INDICATOR Displays a possible leak: OFF No leak indicated. FLASHING Intermittent leak indicates that water has been used for at least 50 of the 96 15-minute intervals during a 24-hour period. ON CONTINUOUSLY Indicates water use for all 96 15-minute intervals during a 24-hour period.</p>
	<p>FLOW INDICATOR Shows the direction of flow through the meter: ON Water in use. OFF Water not in use. FLASHING Water is running slowly. (-) Reverse flow. (+) Forward flow.</p>
<p>RATE</p>	<p>RATE OF FLOW Average flow rate is displayed every six seconds on LCD display.</p>
	<p>LCD DISPLAY Nine-digit LCD displays the meter reading in billing units of measure: cubic feet</p> <ol style="list-style-type: none"> 1 E-Coder™ Basic Reading/Customary 6-digit remote reading 2 Customary sweep hand digits 3 E-Coder PLUS Reading (8-digit remote reading) 4 Testing units used for diagnostics 5 Extended reading units 6 Customary billing units